

## BAV Mitteilungen Nr. 168

K. Bernhard et. al. in IBVS No. 5599.

Bundesdeutsche Arbeitsgemeinschaft für Veränderliche Sterne e.V. (BAV), Munsterdamm 90, D12169 Berlin, Germany.

### Beobachtungen von GSC 2144.1499 = Brh V152, GSC 1830.1432 = Brh V129 und GSC 1419.0091 = Brh V132

Detaillierte Beobachtungen der von Klaus Bernhard entdeckten Veränderlichen Brh V152, Brh V129 und Brh V132 durch Peter Frank, Wolfgang Moschner und Willi Proksch zeigten, dass diese drei Veränderlichen typische W-UMa-Sterne sind.

Die Meldung erschien mit folgendem Kurztext in in IBVS Nr. 5599 (9. November 2004):

**Date:** 9. November 2004

**Reported by:**

Bernhard, K. - BAV, Austria, klaus.bernhard@liwest.at

Frank, P. - BAV, Germany, frank.velden@t-online.de

Moschner, W. - BAV, Germany, wolfgang.moschner@t-online.de

Proksch, W. - BAV, Germany, willi.proksch@t-online.de

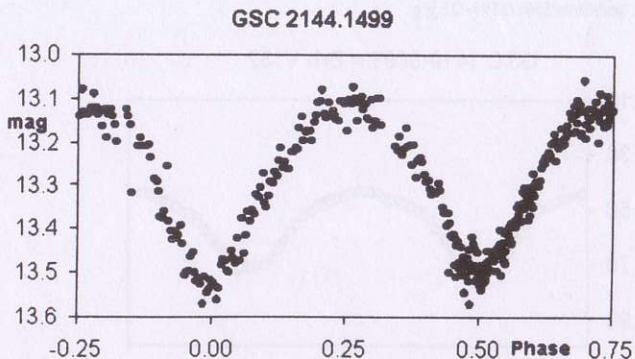
### GSC 2144.1499 = Brh V152

**Remarks:**

GSC 2144.1499 (RA: 19 55 11.6 DEC: +24 57 10, J2000) is a W UMa star with the ephemeris:  $HJD_{min1} = 2453284.307 + 0.36424 \times E$ , range (unfiltered, near V): 13.1-13.6

**Electronically available:**

light curve, Figure: /pub/ibvs/5501/5599-f21.jpg



Data file: /pub/ibvs/5501/5599-t16.txt

ROTSEdata: NSVS 8399096

## GSC 1830.1432 = Brh V129

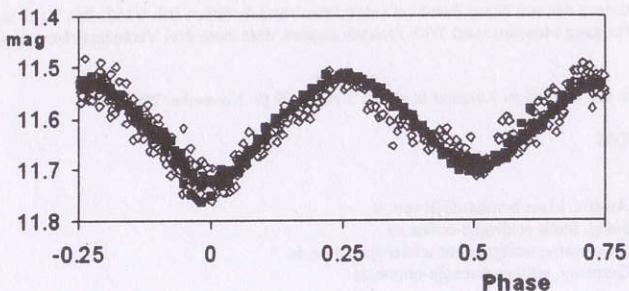
**Remarks:**

GSC 1830.1432 (RA: 04 43 41.3 DEC: +22 53 38, J2000) is a W UMa star with the ephemeris:  $HJD_{minI} = 2452928.5399 + 0.271825 \times E$ , range (unfiltered, near V): 11.5-11.8

**Electronically available:**

light curve, Figure: /pub/ibvs/5501/5599-f22.jpg

GSC 1830-1432



Data file: /pub/ibvs/5501/5599-t17.txt

ROTSEdata: NSVS 6780089

## GSC 1419.0091 = Brh V132

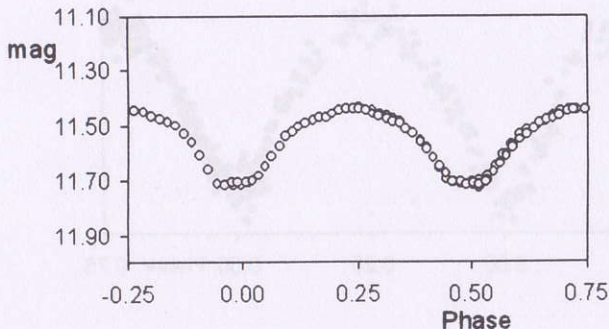
**Remarks:**

GSC 1419.0091 (RA: 10 11 59.2 DEC: +16 52 30, J2000) is a W UMa star with the ephemeris:  $HJD_{minI} = 2452754.4602 + 0.266727 \times E$ , range (unfiltered, near V): 11.4-11.7

**Electronically available:**

light curve, Figure: /pub/ibvs/5501/5599-f23.jpg

GSC 1419-0091 = Brh V132



Data file: /pub/ibvs/5501/5599-t18.txt

ROTSEdata: NSVS 10269934